






REPAIRED BY
DERRICK s.r.l. GENOA
 ISO 9002 APPROVED by 

PHONE 0039 010 6501072 - FAX 0039 010 6521072 - operativo@derrick.it

Machinery Repair Date:.....
 Body Repair Date:.....

Special : Yes No Signed:.....

19/07/2007



5

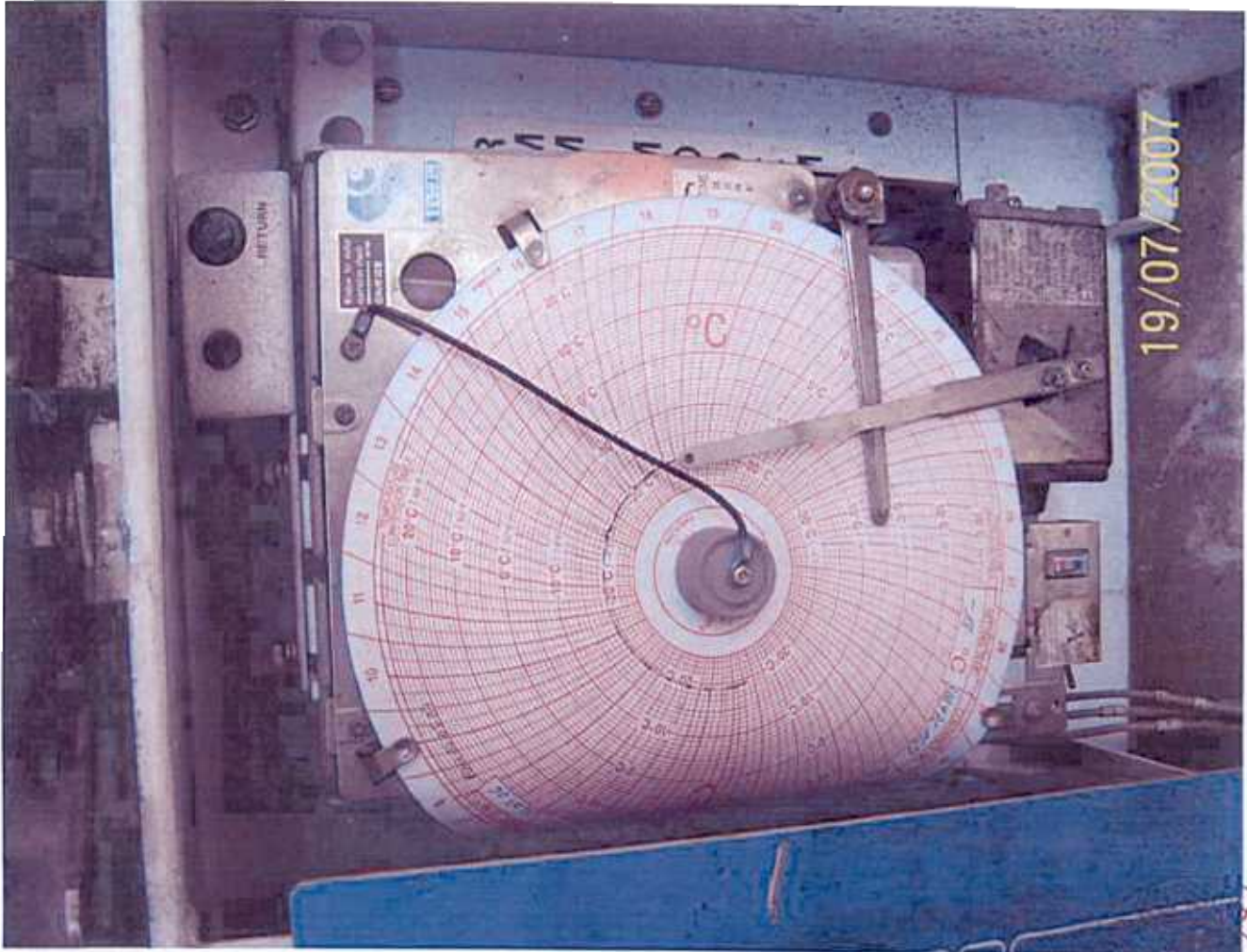

Smith - Holland b.v.
 Refrigeration and container engineers
 phone +31 - (0)181 - 61 86 86
 www.smithholland.nl

pre-trip inspection:
 date: 20-9-07
 sign: [Signature] **O.K.**

Settings:
 Temp. Sett. °C °F
 H.M.C. on/off %R.H.
 Vents. open/closed
 Drains. open/closed
 Bulbmode bulb/nor
 Fansett. on/off h/to/alt
 D.T.S. nor / - °C/°F
 Defr.time hrs

19/07/2007

6

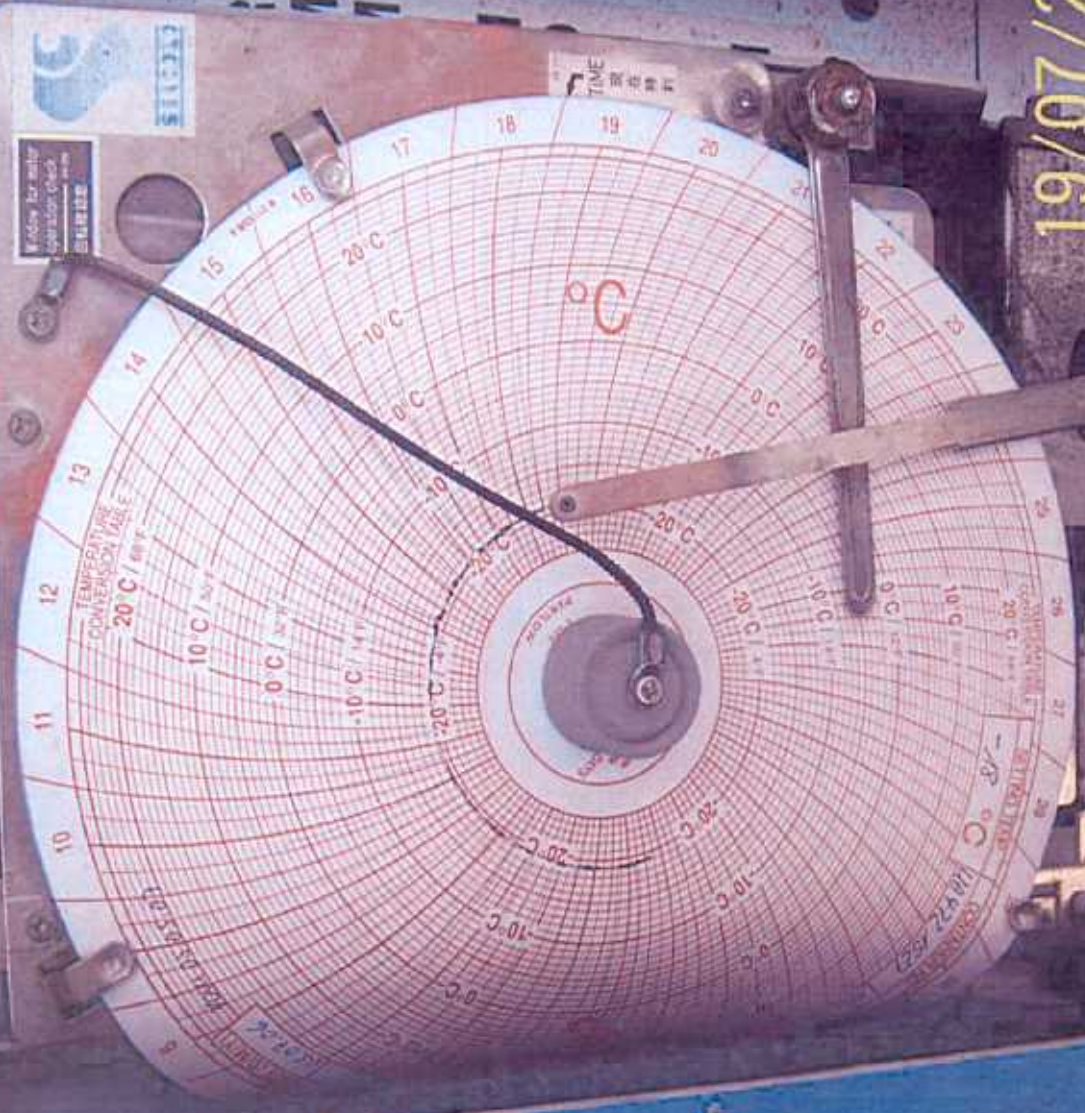


7



8

19/07/2007



Window for safety operation check
SILVERLINE

TEMPERATURE
CONVERSION TABLE
20°C / 68°F
10°C / 50°F
0°C / 32°F
-10°C / 14°F
-20°C / -4°F

CMS

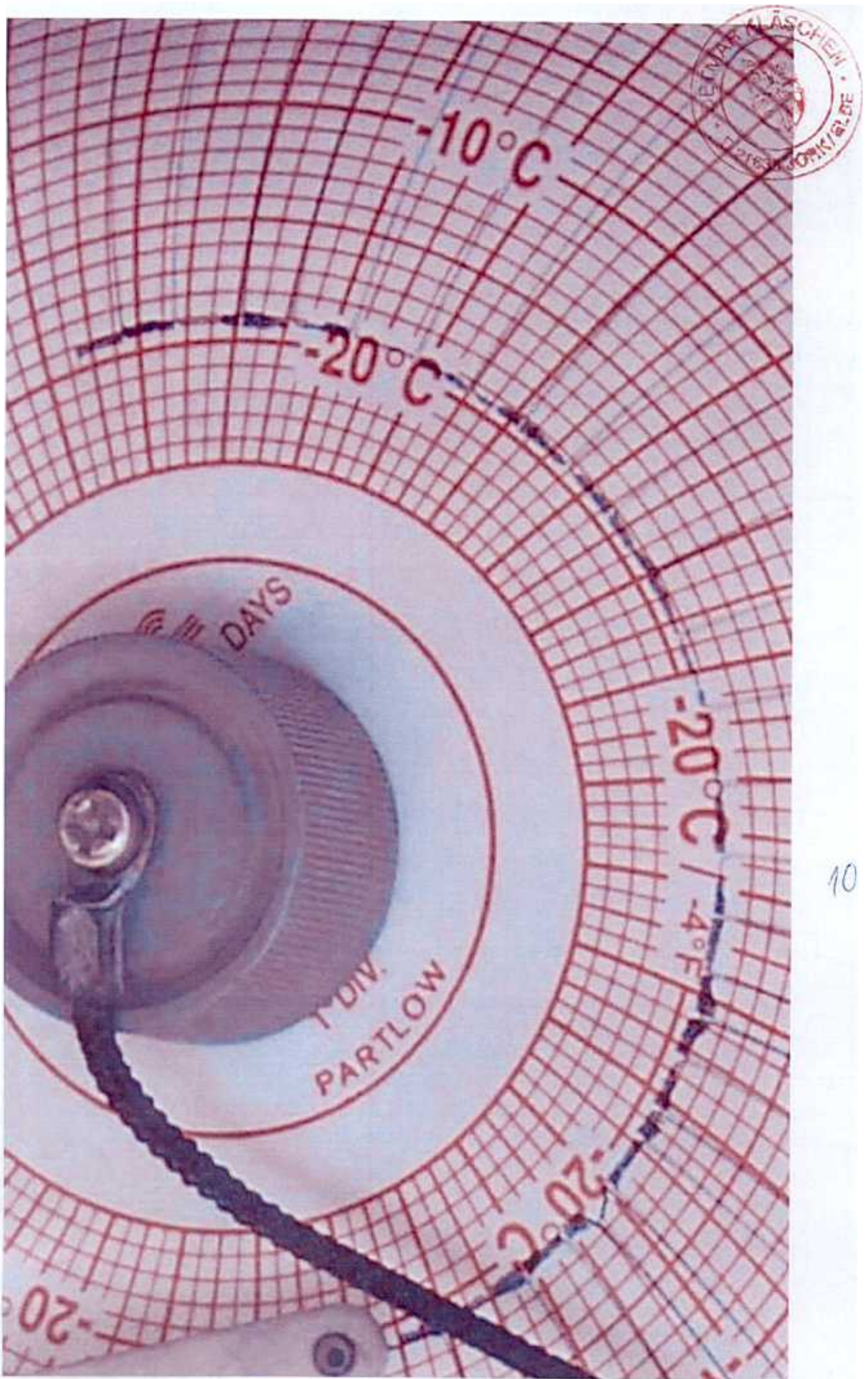
ALARM CODE } HOLD FOR VALVE VOLTAGE }
 ERSE TEMP DISPL }
 ANNUAL DEFROST }
 HOURS TO DEFROST }
 DISPLAY SETPOINT (START REEFER TEST) }
 HOLD DEGR.F }

A.C. SUPPLY VOLTS TOO LOW

FAULTS {
 #11: 5A Sensor or input fault
 #12: 5A Sensor or input fault
 #13: 5A Sensor or input fault
 #14: 5A Sensor or input fault
 #15: 5A Sensor or input fault
 #16: 5A Sensor or input fault
 #17: 5A Sensor or input fault
 #18: 5A Sensor or input fault
 #19: 5A Sensor or input fault
 #20: 5A Sensor or input fault
 #21: 5A Sensor or input fault
 #22: 5A Sensor or input fault
 #23: 5A Sensor or input fault
 #24: 5A Sensor or input fault
 #25: 5A Sensor or input fault
 #26: 5A Sensor or input fault
 #27: 5A Sensor or input fault
 #28: 5A Sensor or input fault
 #29: 5A Sensor or input fault
 #30: 5A Sensor or input fault
 #31: 5A Sensor or input fault
 #32: 5A Sensor or input fault
 #33: 5A Sensor or input fault
 #34: 5A Sensor or input fault
 #35: 5A Sensor or input fault
 #36: 5A Sensor or input fault
 #37: 5A Sensor or input fault
 #38: 5A Sensor or input fault
 #39: 5A Sensor or input fault
 #40: 5A Sensor or input fault
 #41: 5A Sensor or input fault
 #42: 5A Sensor or input fault
 #43: 5A Sensor or input fault
 #44: 5A Sensor or input fault
 #45: 5A Sensor or input fault
 #46: 5A Sensor or input fault
 #47: 5A Sensor or input fault
 #48: 5A Sensor or input fault
 #49: 5A Sensor or input fault
 #50: 5A Sensor or input fault
 #51: 5A Sensor or input fault
 #52: 5A Sensor or input fault
 #53: 5A Sensor or input fault
 #54: 5A Sensor or input fault
 #55: 5A Sensor or input fault
 #56: 5A Sensor or input fault
 #57: 5A Sensor or input fault
 #58: 5A Sensor or input fault
 #59: 5A Sensor or input fault
 #60: 5A Sensor or input fault
 #61: 5A Sensor or input fault
 #62: 5A Sensor or input fault
 #63: 5A Sensor or input fault
 #64: 5A Sensor or input fault
 #65: 5A Sensor or input fault
 #66: 5A Sensor or input fault
 #67: 5A Sensor or input fault
 #68: 5A Sensor or input fault
 #69: 5A Sensor or input fault
 #70: 5A Sensor or input fault
 #71: 5A Sensor or input fault
 #72: 5A Sensor or input fault
 #73: 5A Sensor or input fault
 #74: 5A Sensor or input fault
 #75: 5A Sensor or input fault
 #76: 5A Sensor or input fault
 #77: 5A Sensor or input fault
 #78: 5A Sensor or input fault
 #79: 5A Sensor or input fault
 #80: 5A Sensor or input fault
 #81: 5A Sensor or input fault
 #82: 5A Sensor or input fault
 #83: 5A Sensor or input fault
 #84: 5A Sensor or input fault
 #85: 5A Sensor or input fault
 #86: 5A Sensor or input fault
 #87: 5A Sensor or input fault
 #88: 5A Sensor or input fault
 #89: 5A Sensor or input fault
 #90: 5A Sensor or input fault
 #91: 5A Sensor or input fault
 #92: 5A Sensor or input fault
 #93: 5A Sensor or input fault
 #94: 5A Sensor or input fault
 #95: 5A Sensor or input fault
 #96: 5A Sensor or input fault
 #97: 5A Sensor or input fault
 #98: 5A Sensor or input fault
 #99: 5A Sensor or input fault
 #100: 5A Sensor or input fault

Display Codes

RETURN





11



12





19/07/2007

15



19/07/2007

16



17



19



20



22



23



24

